

Contract

Colour

Book



SCAN
APRIMA

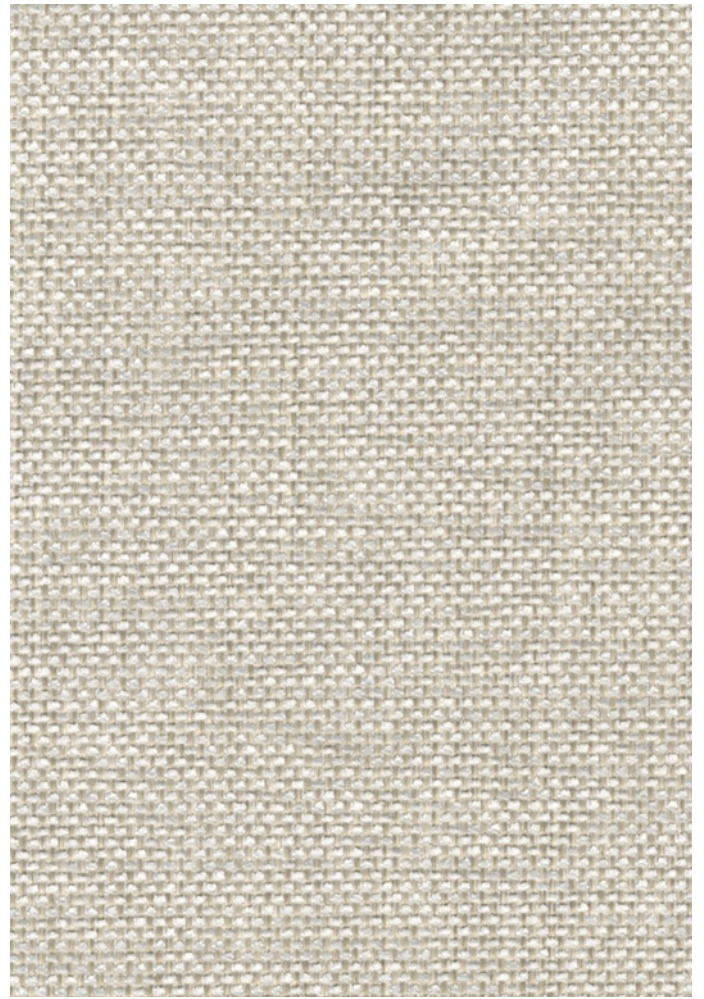
Crevin presents their new contract catalogue in an innovative format with 170 fabric positions available in FR and non-FR. Instead of individual pages, the catalogue offers a totally new concept of one colour card that can be folded in different colour groups or unfolded for a world of colour and texture at one glance. The collection consists of 9 different fabrics presented with technical and sustainability information, care instructions, flammability norms and a feeler swatch.









Crevin links the mindful and sustainability-conscious designer to a distinct contemporary aesthetic based on homely design, performance and artisanal mastery. Thanks to their double woven structure, Crevin contract fabrics are made flame retardant by incorporating Fr-yarn into the base fabric, without applying environmentally harmful chemicals or back-coatings.

Drom
Granit
Libra
Moss
Ito
Moulin
Sorra
Sublim
Velvety

All fabrics are available in both Fr and non-Fr, and come with the quality seal **PERFORMANCE+**, enabling the easy removal of soils and stains with a solution of water and neutral soap.









Drom-Fr		
General Information	Specifications	Care
<p>Composition 34%PES 23%PP 17%MA 13%CO REC 13%PES REC</p> <p>Width 140 + 4cm</p> <p>Weight 479 gr/m2 ± 5 % / 670 gr/lm ± 5 %</p>	<p>Abrasion resistance (End point) 50.000 EN ISO 12947-2:1998</p> <p>Pilling resistance 4-5 EN ISO 12945/2:2000</p> <p>Lightfastness 6-7 EN ISO 105-B02:1998 and 105 B02/A01:2002</p>	<p>PERFORMANCE+ Easy to clean, longlasting fabrics</p> <p>Washing conditions</p> <p>  </p> <p>Dimensional change domestic washing and drying (%) Warp: -2 Weft: -1,5 EN ISO 3759:2008, EN ISO 6330:2000 and EN ISO 5077:2008</p>
Sustainability	Ignitability*	
<ul style="list-style-type: none"> Life Cycle assessment data available. Double-woven with recycled fibre. In-house, closed-loop recycling of textile waste. In-house, circular water recycling. 100% electricity from renewable sources. 	<p>BS5852 Source 0 NFPA 260:2013</p> <p>BS5852 Source 1 BS 7176 Low Hazard</p> <p>EN1021-Part 1:2006 UNI 9175 Clase 3IM</p> <p>EN1021-Part 2:2006 IMO Anexo 1 Parte 8</p> <p>CAL TB 117:2013</p>	
<p>      </p>		

*This fabric is also available in non Fr. Send your inquiry to: crevin@crevin.com

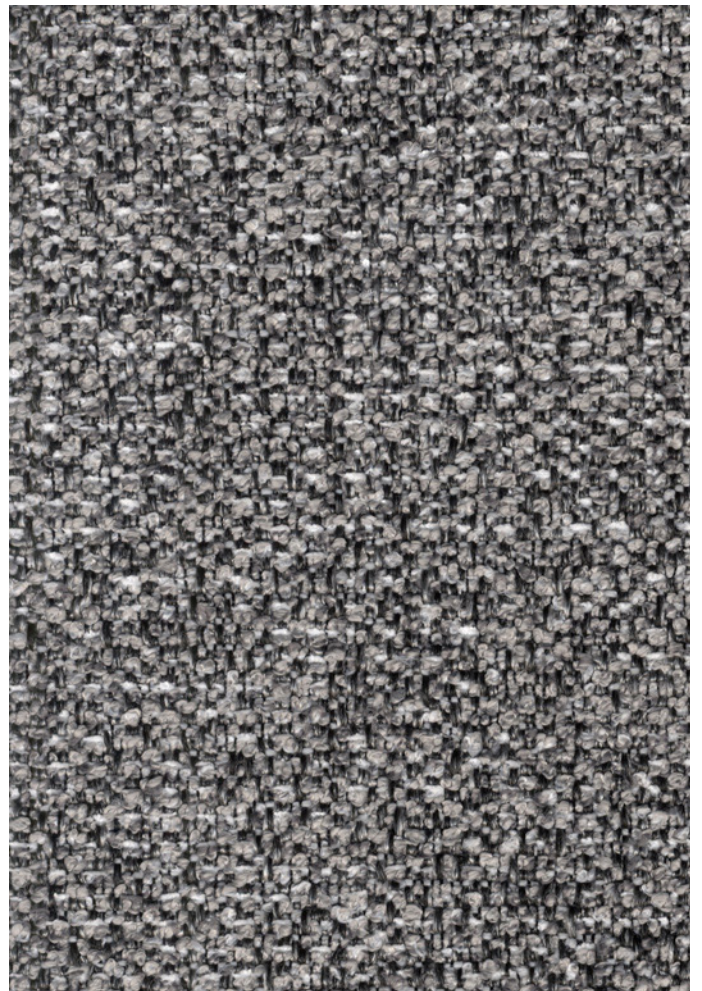
- Dense, snag-resistant, low-pile weave.
- Highly durable and resistant to wear.
- Minimalist look, connotations of natural canvas.
 - Easy to clean with water and soap.
 - 26% recycled content.
 - Available in FR and non-FR.

Granit-Fr

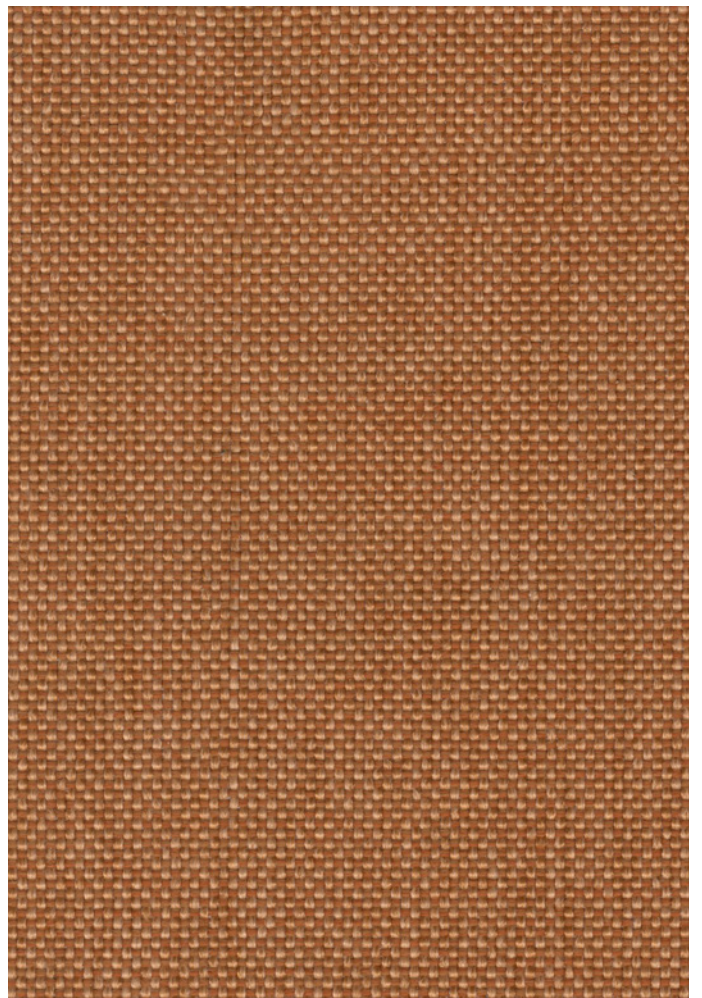
Made out of 80% recycled materials, Granit pays tribute to timeless craft while setting new standards in sustainability.

General Information	Specifications	Care
<p>Composition 47%PES REC 24%PP REC 10%PES 10%MA 9%CO REC</p> <p>Width 140 + 4cm</p> <p>Weight 590 gr/m² ± 5 % / 826 gr/lm ± 5 %</p>	<p>Abrasion resistance (End point) 50.000 EN ISO 12947-2:1998</p> <p>Pilling resistance 4-5 EN ISO 12945/2:2000</p> <p>Lightfastness 5-6 EN ISO 105-B02:1998 and 105 B02/A01:2002</p>	<p>PERFORMANCE+ Easy to clean, longlasting fabrics</p> <p>Washing conditions</p> <p>  </p> <p>Dimensional change domestic washing and drying (%) Warp: -3 Weft: -3 EN ISO 3759:2008, EN ISO 6330:2000 and EN ISO 5077:2008</p>
<p>Sustainability</p> <ul style="list-style-type: none"> • Life Cycle assessment data available. • Double-woven with recycled fibre. • In-house, closed-loop recycling of textile waste. • In-house, circular water recycling. • 100% electricity from renewable sources. 	<p>Ignitability*</p> <p>BS5852 Source 0 NFPA 260:2013 BS5852 Source 1 BS 7176 Low Hazard EN1021-Part 1:2006 UNI 9175 Clase 3IM EN1021-Part 2:2006 CAL TB 117:2013</p>	
<p>      </p>		

*This fabric is also available in non Fr. Send your inquiry to: crevin@crevin.com









- New generation of recycled fabrics.
 - Multi-colour, textured weave.
- 80% recycled content from 4 different materials.
 - Natural, rustic, and homely look
 - Easy to clean with water and soap.
 - Available in FR and non-FR.



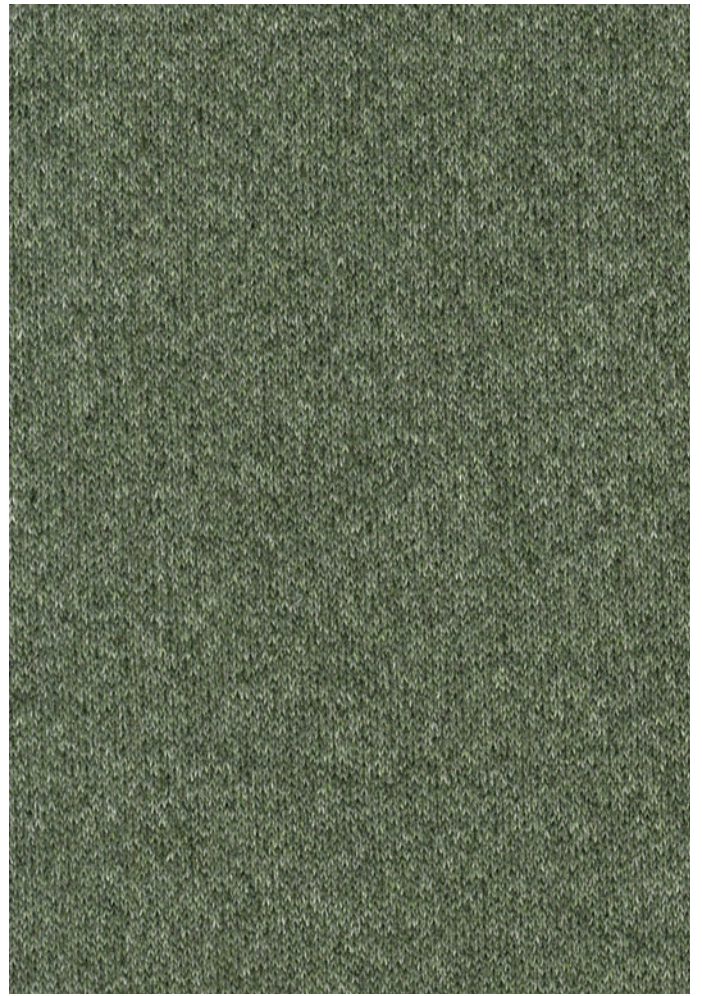
Libra-Fr

Libra is made out of polypropylene microfibre, giving soft touch, apart from great wear and fade resistance.

General Information	Specifications	Care
<p>Composition 49%PP 21%MA 16%CO REC 14%PES REC</p> <p>Width 140 + 4cm</p> <p>Weight 450 gr/m² ± 5 % 630 gr/lm ± 5 %</p>	<p>Abrasion resistance (End point) 66.000 EN ISO 12947-2:1998</p> <p>Pilling resistance 4-5 EN ISO 12945/2:2000</p> <p>Lightfastness >6 EN ISO 105-B02:1998 and 105 B02/A01:2002</p>	<p>PERFORMANCE+ Easy to clean, longlasting fabrics</p> <p>Washing conditions</p> <p>  </p> <p>Dimensional change domestic washing and drying (%) Warp: -1 Weft: -1 EN ISO 3759:2008, EN ISO 6330:2000 and EN ISO 5077:2008</p>
<p>Sustainability</p> <ul style="list-style-type: none"> • Life Cycle assessment data available. • Double-woven with recycled fibre. • In-house, closed-loop recycling of textile waste. • In-house, circular water recycling. • 100% electricity from renewable sources. 	<p>Ignitability*</p> <p>BS5852 Source 0 NFPA 260:2013 BS5852 Source 1 BS 7176 Low Hazard EN1021-Part 1:2006 UNI 9175 Clase 3IM EN1021-Part 2:2006 IMO Anexo 1 Parte 8 CAL TB 117:2013</p>	
<p>      </p>		

*This fabric is also available in non Fr. Send your inquiry to: crevin@crevin.com

- Polypropylene surface fabric.
- Highly resistant to colour loss.
 - Pilling and wear resistant.
 - Bleach-cleanable.
 - 30% recycled content.
- Available in FR and non-FR.



Moss

Moss is a knitted, stretchable fabric that resembles felt wool. Its special melange yarn accounts for deep, warm shades.







General Information	Specifications	Care												
<p>Composition 100%PES FR</p> <p>Width 140 + 4cm</p> <p>Weight 488 gr/m² ± 5 % 707 gr/lm ± 5 %</p>	<p>Abrasion resistance (End point) 50.000 EN ISO 12947-2:1998</p> <p>Pilling resistance 4-5 EN ISO 12945/2:2000</p> <p>Lightfastness 6-7 EN ISO 105-B02:1998 and 105 B02/A01:2002</p>	<p>Washing conditions</p> <p></p> <p>Dimensional change domestic washing and drying (%) Warp: -3 Weft: +1,5 EN ISO 3759:2008, EN ISO 6330:2000 and EN ISO 5077:2008</p>												
<p>Sustainability</p> <ul style="list-style-type: none"> • Life Cycle assessment data available. • Double-woven with recycled fibre. • In-house, closed-loop recycling of textile waste. • In-house, circular water recycling. • 100% electricity from renewable sources. 	<p>Ignitability*</p> <table border="0"> <tr> <td>BS5852 Source 0/1**</td> <td>IMO Annex 1 Part 8</td> </tr> <tr> <td>EN1021-Part 1/2:2006</td> <td>NF D 60 013</td> </tr> <tr> <td>CAL TB 117:2013</td> <td>NF P92-507-M1</td> </tr> <tr> <td>NFPA 260:2013</td> <td>DIN 4102 B2</td> </tr> <tr> <td>BS 7176 Low Hazard</td> <td>EN ISO 354 (Acoustic)</td> </tr> <tr> <td>UNI 9175 Classe 3IM**</td> <td>**FR Foam</td> </tr> </table>	BS5852 Source 0/1**	IMO Annex 1 Part 8	EN1021-Part 1/2:2006	NF D 60 013	CAL TB 117:2013	NF P92-507-M1	NFPA 260:2013	DIN 4102 B2	BS 7176 Low Hazard	EN ISO 354 (Acoustic)	UNI 9175 Classe 3IM**	**FR Foam	
BS5852 Source 0/1**	IMO Annex 1 Part 8													
EN1021-Part 1/2:2006	NF D 60 013													
CAL TB 117:2013	NF P92-507-M1													
NFPA 260:2013	DIN 4102 B2													
BS 7176 Low Hazard	EN ISO 354 (Acoustic)													
UNI 9175 Classe 3IM**	**FR Foam													
<p> </p>														

*This fabric is also available in non Fr. Send your inquiry to: crevin@crevin.com

- Knit with felt-wool look.
- Stretch fabric, highly mouldable.
- Warm mélangé colours, soft touch.
 - Inherently FR.
- Easy to clean with water and soap.
- Apt for horizontal and vertical use.

Ito-Fr

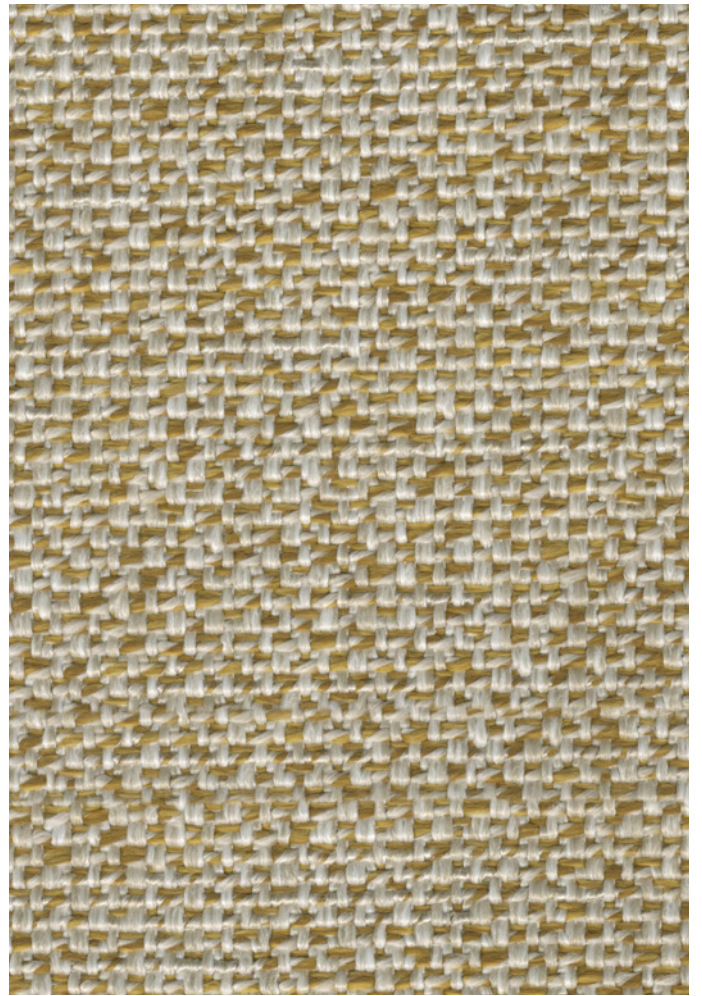
A dense and wealthy weave highlights Ito's yarn, revealing rich earthy shades from light to dim in a subtle surface texture.

General Information	Specifications	Care
<p>Composition 49%PES 17%PP 13%MA 11%CO REC 10%PES REC</p> <p>Width 140 + 4cm</p> <p>Weight 618 gr/m2 ± 5 % / 865 gr/lm ± 5 %</p>	<p>Abrasion resistance (End point) >100.000 EN ISO 12947-2:1998</p> <p>Pilling resistance 4-5 EN ISO 12945/2:2000</p> <p>Lightfastness 5-6 EN ISO 105-B02:1998 and 105 B02/A01:2002</p>	<p>PERFORMANCE+ Easy to clean, longlasting fabrics</p> <p>Washing conditions </p> <p>Dimensional change domestic washing and drying (%) Warp: -2,4 Weft: -2,6 EN ISO 3759:2008, EN ISO 6330:2000 and EN ISO 5077:2008</p>
<p>Sustainability</p> <ul style="list-style-type: none"> • Life Cycle assessment data available. • Double-woven with recycled fibre. • In-house, closed-loop recycling of textile waste. • In-house, circular water recycling. • 100% electricity from renewable sources. 	<p>Ignitability*</p> <p>BS5852 Source 0 NFPA 260:2013 BS5852 Source 1 BS 7176 Low Hazard EN1021-Part 1:2006 UNI 9175 Clase 3IM EN1021-Part 2:2006 CAL TB 117:2013</p>	
<p>      </p>		

*This fabric is also available in non Fr. Send your inquiry to: crevin@crevin.com



- Small boucle texture.
- Minimalist, rustic appearance.
- Abrasion resistant, noble aging.
- Easy to clean with water and soap.
 - 20% recycled content.
- Available in FR and non-FR.



Moulin-Fr

Composed of distinctly coloured yarns, Moulin creates shades that embrace each other in rustic, earthy textures.







General Information	Specifications	Care
<p>Composition 77%PP 10%PES REC 7%MA 6%CO REC</p> <p>Width 140 + 4cm</p> <p>Weight 568 gr/m² ± 5 % 795 gr/lm ± 5 %</p>	<p>Abrasion resistance (End point) 80.000 EN ISO 12947-2:1998</p> <p>Pilling resistance 4-5 EN ISO 12945/2:2000</p> <p>Lightfastness >6 EN ISO 105-B02:1998 and 105 B02/A01:2002</p>	<p>PERFORMANCE+ Easy to clean, longlasting fabrics</p> <p>Washing conditions</p> <p> </p> <p>Dimensional change domestic washing and drying (%) Warp: -3 Weft: -2 EN ISO 3759:2008, EN ISO 6330:2000 and EN ISO 5077:2008</p>
<p>Sustainability</p> <ul style="list-style-type: none"> • Life Cycle assessment data available. • Double-woven with recycled fibre. • In-house, closed-loop recycling of textile waste. • In-house, circular water recycling. • 100% electricity from renewable sources. 	<p>Ignitability*</p> <p>BS5852 Source 0 NFPA 260:2013 BS5852 Source 1 BS 7176 Low Hazard EN1021-Part 1:2006 UNI 9175 Clase 3IM EN1021-Part 2:2006 CAL TB 117:2013</p>	
<p> </p>		

*This fabric is also available in non Fr. Send your inquiry to: crevin@crevin.com

- Rustic-contemporary weave.
- Multi-colour with a vintage feel.
- Abrasion, pilling, and light resistant.
- Easy to clean with water and soap.
 - 16% recycled content.
- Available in FR and non-FR.

Sorra-Fr

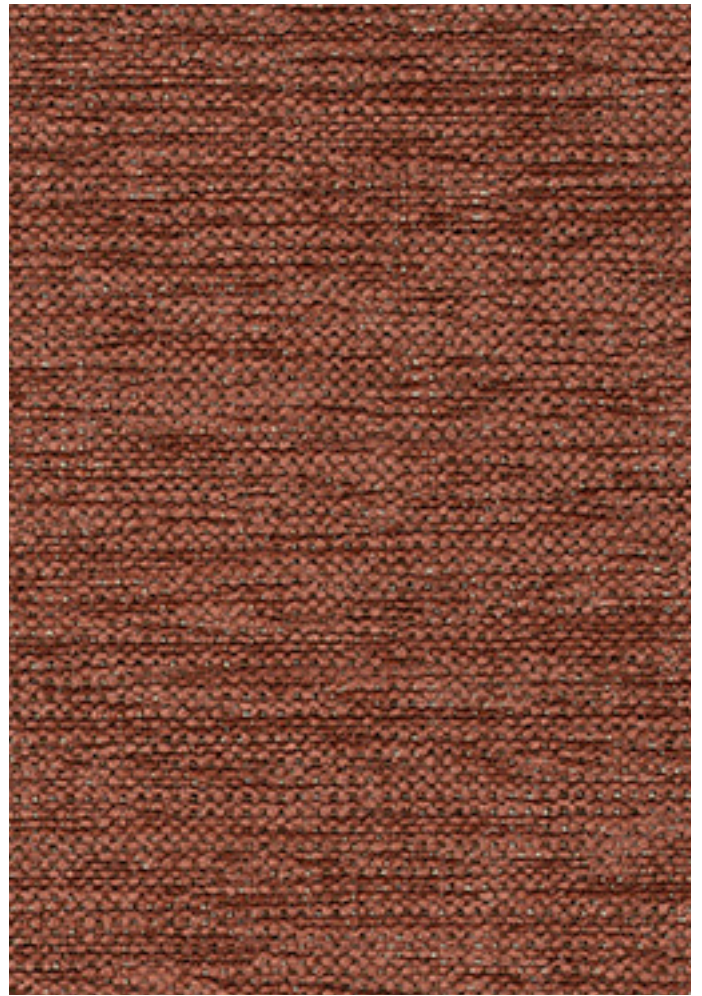
Sorra is the return to old-school craftsmanship. The grainy texture of a custom yarn brings the flair of artisanal quality.

General Information	Specifications	Care
<p>Composition 59%PES 21%PES REC 11%MA 9%CO REC</p> <p>Width 140 + 4cm</p> <p>Weight 640 gr/m² ± 5 % 896 gr/lm ± 5 %</p>	<p>Abrasion resistance (End point) 80.000 EN ISO 12947-2:1998</p> <p>Pilling resistance 4-5 EN ISO 12945/2:2000</p> <p>Lightfastness 5-6 EN ISO 105-B02:1998 and 105 B02/A01:2002</p>	<p>PERFORMANCE+ Easy to clean, longlasting fabrics</p> <p>Washing conditions</p> <p>  </p> <p>Dimensional change domestic washing and drying (%) Warp: -1 Weft: -1 EN ISO 3759:2008, EN ISO 6330:2000 and EN ISO 5077:2008</p>
<p>Sustainability</p> <ul style="list-style-type: none"> • Life Cycle assessment data available. • Double-woven with recycled fibre. • In-house, closed-loop recycling of textile waste. • In-house, circular water recycling. • 100% electricity from renewable sources. 	<p>Ignitability*</p> <p>BS5852 Source 0 NFPA 260:2013 BS5852 Source 1 BS 7176 Low Hazard EN1021-Part 1:2006 UNI 9175 Clase 3IM EN1021-Part 2:2006 CAL TB 117:2013</p>	
<p>      </p>		

*This fabric is also available in non Fr. Send your inquiry to: crevin@crevin.com









- Faux-plain with grainy texture.
- Natural quality, resembling raw linen.
 - Abrasion and pilling resistant.
- Easy to clean with water and soap.
 - 30% recycled content.
- Available in FR and non-FR.



Sublim-Fr

Sublim is a high-performing basic with a subtle jacquard pattern, presented in a range of 26 colours.







General Information	Specifications	Care
<p>Composition 78%PES 12%MA 10%CO REC</p> <p>Width 140 + 4cm</p> <p>Weight 432 gr/m² ± 5 % 605 gr/lm ± 5 %</p>	<p>Abrasion resistance (End point) 80.000 EN ISO 12947-2:1998</p> <p>Pilling resistance 5 EN ISO 12945/2:2000</p> <p>Lightfastness 5-6 EN ISO 105-B02:1998 and 105 B02/A01:2002</p>	<p>PERFORMANCE+ Easy to clean, longlasting fabrics</p> <p>Washing conditions</p> <p>  </p> <p>Dimensional change domestic washing and drying (%) Warp: -2 Weft: -3 EN ISO 3759:2008, EN ISO 6330:2000 and EN ISO 5077:2008</p>
<p>Sustainability</p> <ul style="list-style-type: none"> • Life Cycle assessment data available. • Double-woven with recycled fibre. • In-house, closed-loop recycling of textile waste. • In-house, circular water recycling. • 100% electricity from renewable sources. 	<p>Ignitability*</p> <p>BS5852 Source 0 NFPA 260:2013 BS5852 Source 1 BS 7176 Low Hazard EN1021-Part 1:2006 UNI 9175 Clase 3IM EN1021-Part 2:2006 IMO Annex 1 Part 8 CAL TB 117:2013</p>	
<p>      </p>		

*This fabric is also available in non Fr. Send your inquiry to: crevin@crevin.com

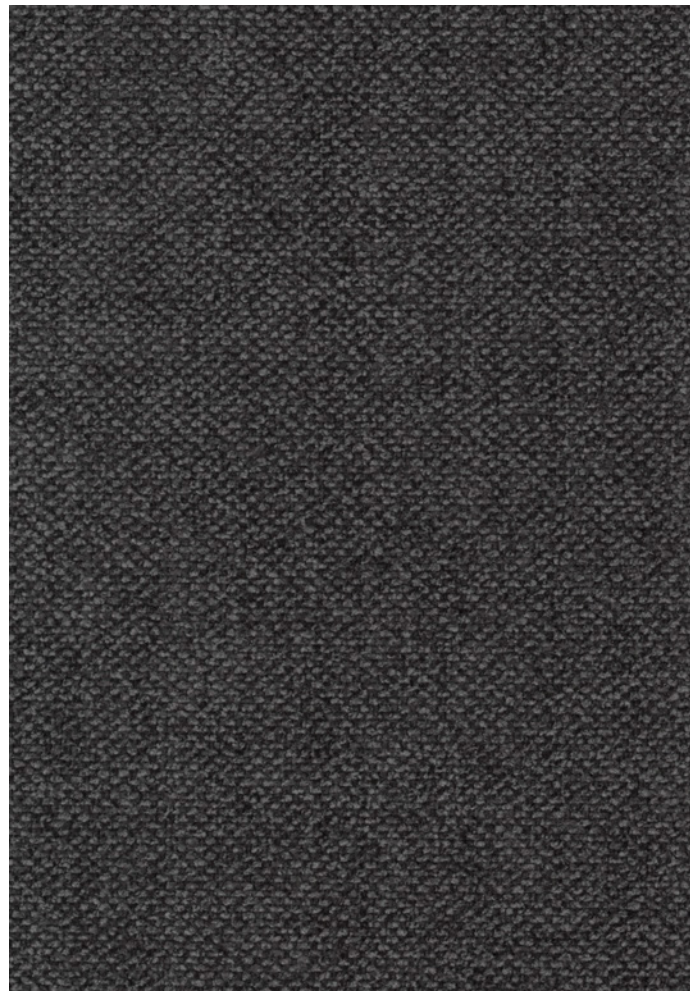
- Semi-plain with subtle pattern.
 - Very soft touch.
 - Durable, pilling resistant.
- Excellent cleaning with water and soap.
 - 10% recycled content.
- Available in FR and non-FR.

Velvety-Fr

Velvety is a piece-dyed velvet lookalike with an extraordinary performance, available in a wide variety of colours.

General Information	Specifications	Care
<p>Composition 74%PES 12%PES REC 7%CO REC 7%MA</p> <p>Width 140 + 4cm</p> <p>Weight 571 gr/m² ± 5 % 800 gr/lm ± 5 %</p>	<p>Abrasion resistance (End point) 200.000 EN ISO 12947-2:1998</p> <p>Pilling resistance 5 EN ISO 12945/2:2000</p> <p>Lightfastness 5-6 EN ISO 105-B02:1998 and 105 B02/A01:2002</p>	<p>PERFORMANCE+ Easy to clean, longlasting fabrics</p> <p>Washing conditions</p> <p>  </p> <p>Dimensional change domestic washing and drying (%) Warp: -1,6 Weft: -2 EN ISO 3759:2008, EN ISO 6330:2000 and EN ISO 5077:2008</p>
<p>Sustainability</p> <ul style="list-style-type: none"> • Life Cycle assessment data available. • Double-woven with recycled fibre. • In-house, closed-loop recycling of textile waste. • In-house, circular water recycling. • 100% electricity from renewable sources. 	<p>Ignitability*</p> <p>BS5852 Source 0 NFPA 260:2013 BS5852 Source 1 BS 7176 Low Hazard EN1021-Part 1:2006 UNI 9175 Clase 3IM EN1021-Part 2:2006 IMO Anexo 1 Parte 8 CAL TB 117:2013</p>	
<p>      </p>		

*This fabric is also available in non Fr. Send your inquiry to: crevin@crevin.com



- Soft, velvet lookalike.
- Classic-contemporary, timeless feel.
- Multifunctional, adaptable to any space.
- Very durable, snag and pilling resistant.
- Easy to clean with water and soap.
 - 18% recycled content.
- Available in FR and non-FR.

Designed

and

Crafted

We design, we weave, we dye, we finish.
In short, we create. Our expertise
comes from understanding every
aspect of fabrics.

We are born and bred in Terrassa,
a small town close to Barcelona and
home to innovative textile production
since the late 19th century.

It continues to be a place of respect
for tradition, people and excellence in
cultivating sustainable technologies.

www.crevin.com

in Terrassa

crevin

(Barcelona)